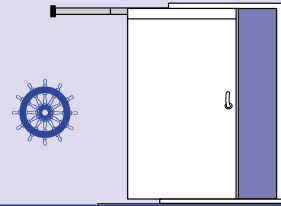


SLIDING SINGLE LIGHTWEIGHT DOOR HI-SKD-LWC

A60 fire class
Tested to IMO 754(18)
FTP code part 3

EC Type-Examination Certified
CE Marked



STANDARD SPECIFICATION

Doorleaf: 46 mm thick, lightweight board, insulation core with stiffeners, steel edge trim.

Frame arrangement: Frame, track, trolley, counterweight, air brake and accessories. Prepared for welding to bulkhead.

Sill: Inverted U-profile in stainless steel alt 1.

Hoseport hatch: On request.

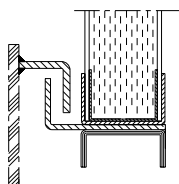
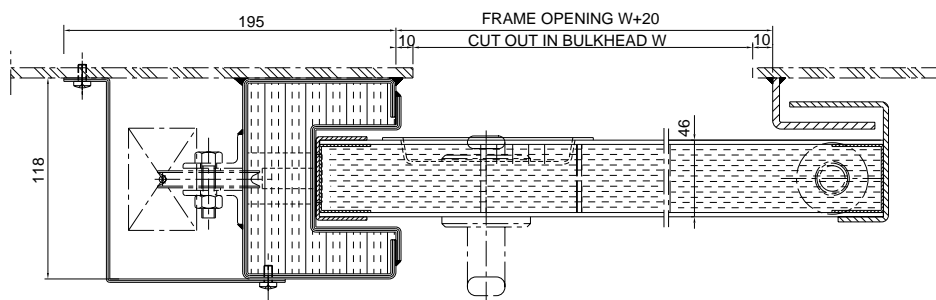
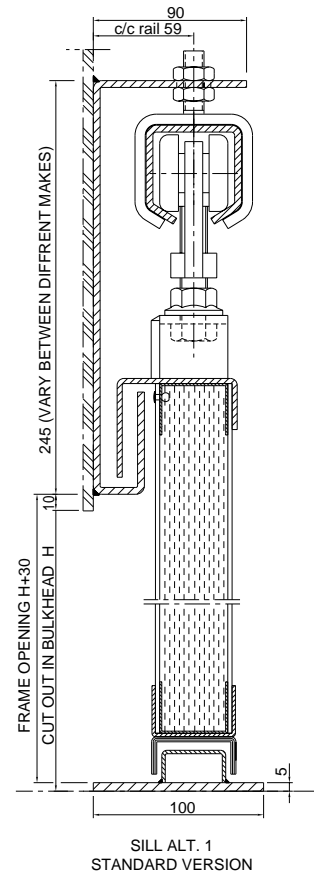
Finish: Primed.

Hardware: Hook latch, recessed shell handle on bulkhead side, lever handles.

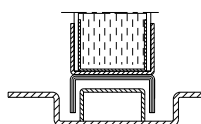
Max. size: 2557 x 2158 mm, W x H

Weight: Depending on core and surface.

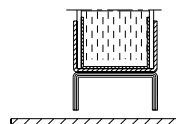
Double leaf door: Data sheet MAS2.



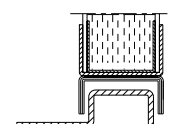
SILL ALT. 2



SILL ALT. 3



SILL ALT. 4



SILL ALT. 5

SPECIAL FACTS

Optional features: Data sheet MOAS

Pneumatic operation: Data sheet MP1

Electric operation: Data sheet ME1