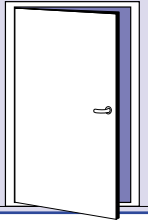


# HINGED SEMI WATERTIGHT DOOR HI-BD-F79-2-WF-1

Watertightness  
3,5 METER WATER COLUMN AT HINGE SIDE  
A60 fire class  
Tested to IMO 754(18) FTP Code Part 3

EC Type-Examination Certified  
CE Marked



## STANDARD SPECIFICATION

**Doorleaf:** 54 mm thick, 2 mm steel skins and insulation core.

**Frame:** 4 mm pressed profile, welded to the bulkhead.

**Sill:** As frame profile.

**Seal:** Adjustable seal holder with chloroprene rubber seal.

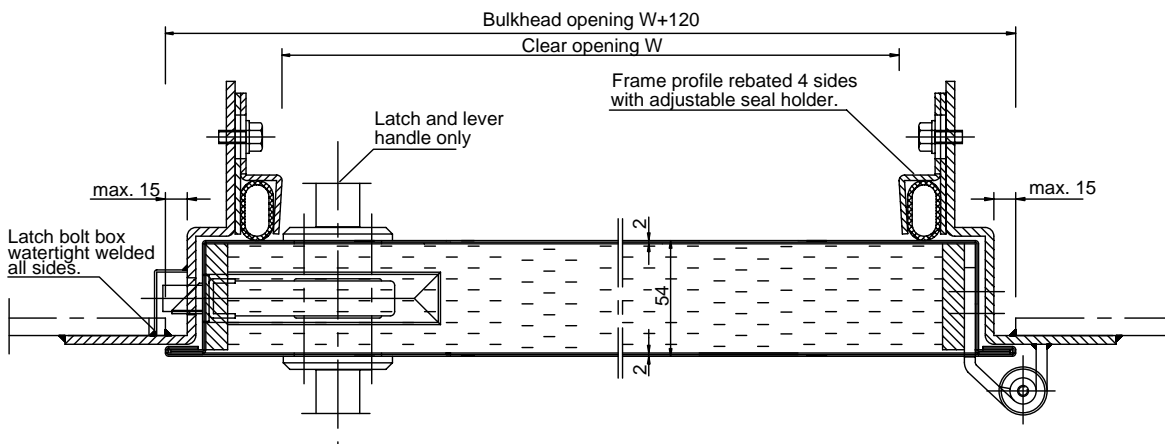
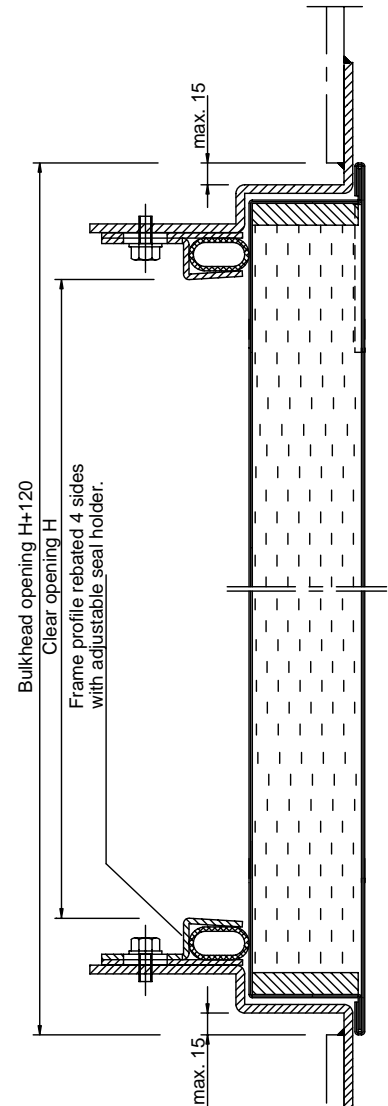
**Finish:** Door leaf galvanized and primed. Frame mild steel and primed.

**Hardware:** Latch. Hinges. Extra strong door closer required.

**Max. size:** Refer to certificate.

**Weight:** Doorleaf and frame  $\approx$  120 kg/m<sup>2</sup>.

**Inswing door:** Data sheet MAH9



**SPECIAL FACTS**  
Optional features: Data sheet MOAH  
Pneumatic control: Data sheet MP2