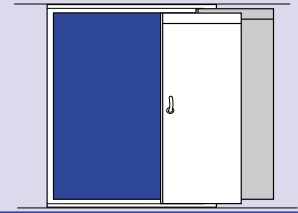


SLIDING TANDEM DOOR HI-SKDD-TANDEM

A60 fire class
Tested to IMO 754 (18)
FTP code part 3

EC Type-Examination Certified
CE Marked



STANDARD SPECIFICATION

Doorleaf: 46 mm thick, lightweight board, insulation core with stiffeners, steel edge trim.

Frame arrangement: Frame, track, trolley, counterweight and air brake. Prepared for welding to bulk-head.

Sill: alt 4.

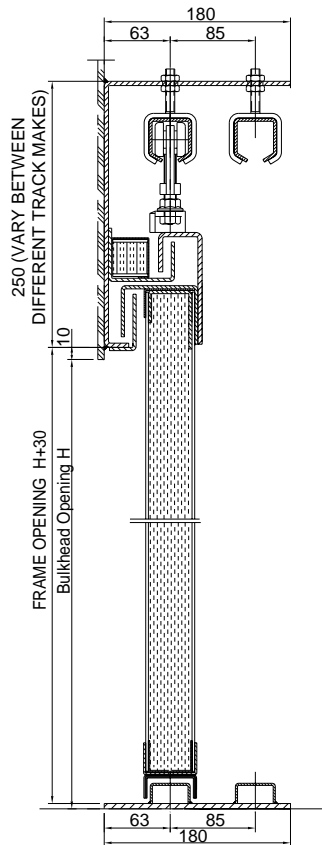
Hoseport hatch: On request.

Finish: Primed.

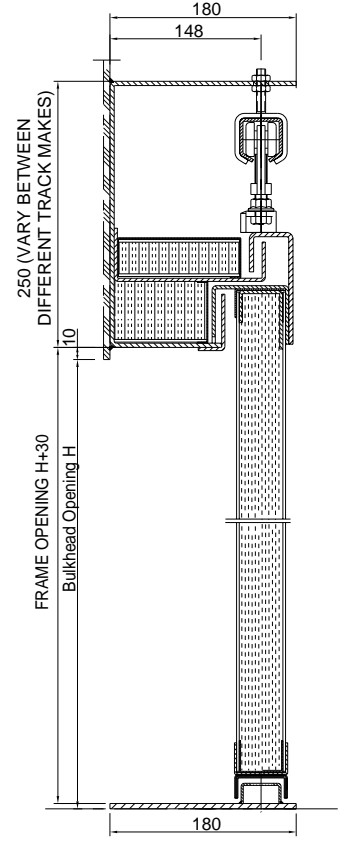
Hardware: Hook latch, recessed shell handle on bulkhead side, lever handles.

Max. size: 2410 x 2405 mm, W x H

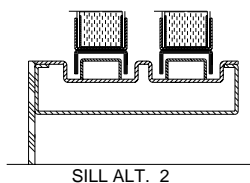
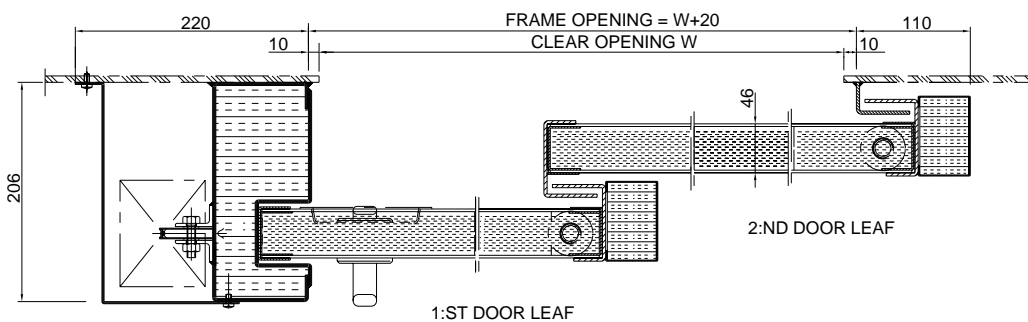
Weight: Depending on core and surface.



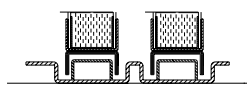
SILL ALT. 1 STANDARD VERSION
SECTION 2:ND DOOR LEAF



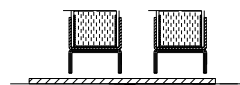
SILL ALT. 1 STANDARD VERSION
SECTION 1:ST DOOR LEAF



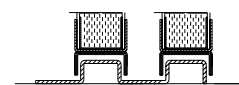
SILL ALT. 2



SILL ALT. 3



SILL ALT. 4



SILL ALT. 5

SPECIAL FACTS

- Optional features:** Data sheet MOAS
- Pneumatic operation:** Data sheet MP1
- Electric operation:** Data sheet ME1