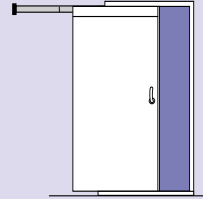


SLIDING SINGLE DOOR HI-SKD-F79-2

A60 fire class
Testet to IMO 754 (18)
FTP code part 3

EC Type-Examination Certified
CE Marked



STANDARD SPECIFICATION

Doorleaf: 43-54 mm thick, 1.0 - 1.5 mm galvanized steel skins, insulation core, reinforced.

Frame arrangement: Frame, track, trolley, counterweight, air brake and accessories. Prepared for welding to bulkhead.

Sill: Galvanized flat bar, alt. 4.

Hoseport hatch: On request.

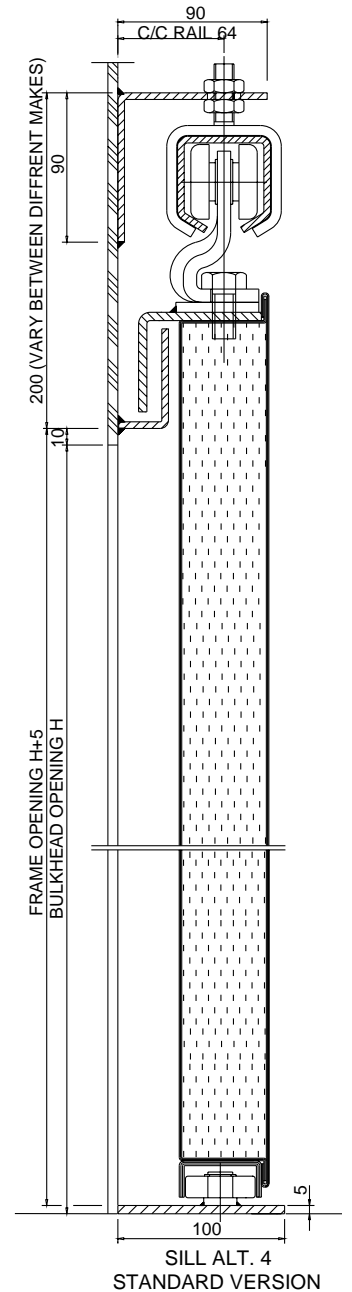
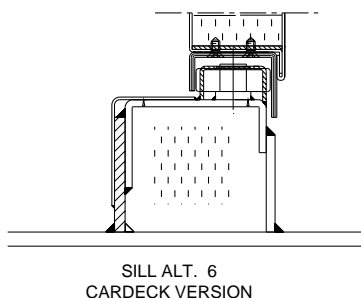
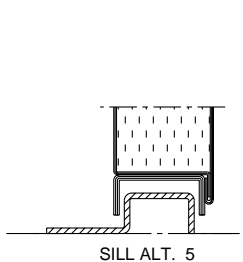
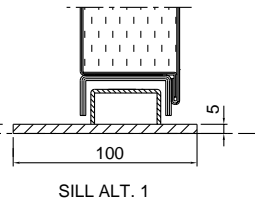
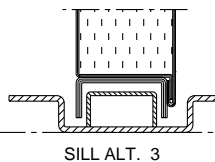
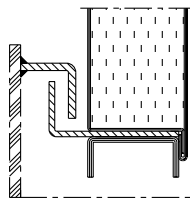
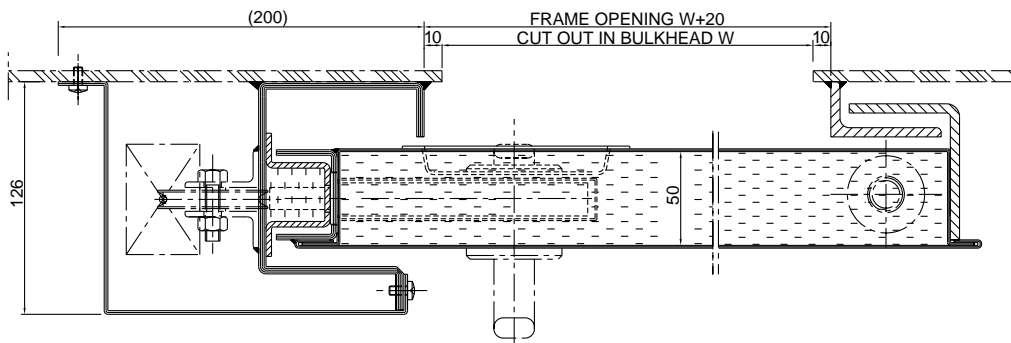
Finish: Primed.

Hardware: Hook latch, recessed shell handle, on bulkhead side, lever handles.

Max. size: 2400 x 2400 mm, W x H, single door
2405 x 2650 mm, W x H, double door

Weight: Doorleaf ≈ 35 kg/m²
Doorleaf and frame ≈ 50 kg/m²

Double leaf door: Data sheet MAS8.



SPECIAL FACTS

Optional features: Data sheet MOAS

Pneumatic control: Data sheet MP1

Electric control: Data sheet ME1