

SLIDING SEMI WATERTIGHT DOOR HI-SKD-F79-2-WF

A60 fire class

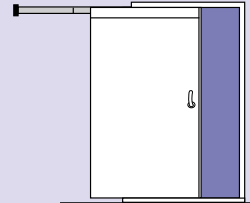
Tested to IMO 754(18)

Watertightness: 4 meters water column at either sides.

EC Type-Examination Certified

CE Marked

FTP code part 3



STANDARD SPECIFICATION

Doorleaf: 54 mm thick, 2 mm steel skins, insulation core. Incl. front edge safety strip.

Frame: 6 mm pressed profile, welded to the bulkhead. Complete with track, swing trolleys, brackets and steering guides.

Sill: As frame profile.

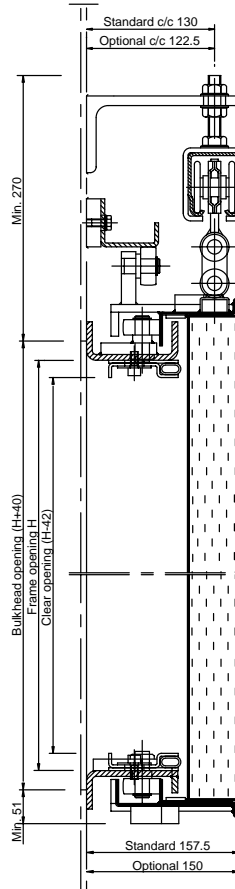
Seal arrangement: Adjustable seal holder with chloroprene rubber seal.

Finish: Door leaf galvanized and primed. Frame mild steel and primed.

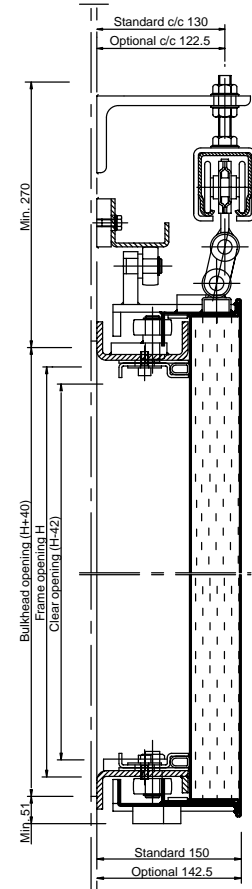
Hardware: Locking arrangement and emergency opening device.

Max. size: 1400 x 2400, mm W x H.

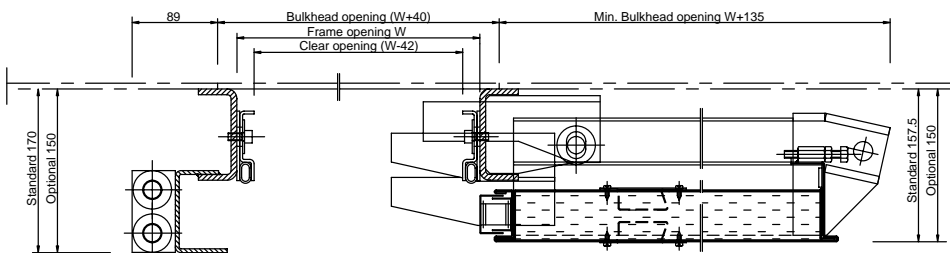
Weight: Doorleaf and frame \approx 160 kg/m², excluding pneumatic or electric control system.



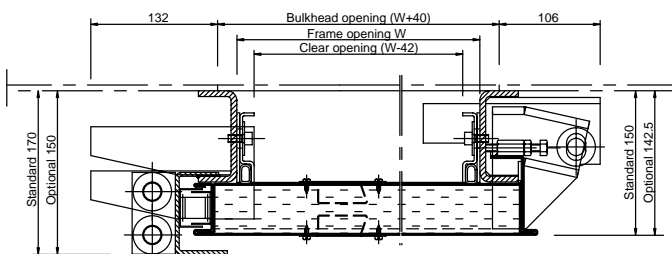
Door open away from the seal



Door closed tight to the seal



Door open away from the seal



Door closed tight to the seal

SPECIAL FACTS

Optional features: Data sheet MOAS

Pneumatic control: Data sheet MP1

Electric control: Data sheet ME1

Installation: MI 7