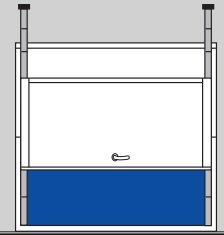


SLIDING VERTICAL SEMI WATERTIGHT DOOR HI-SKD-94-VERTICAL-WF

A60 fire class

Case by case approval.

Watertightness: 4 meters water column from both sides.



STANDARD SPECIFICATION

Doorleaf: 54 mm thick, 2 mm steel skins, insulation core. Incl. front edge safety strip.

Frame: 6 mm pressed profile, welded to the bulkhead. Complete with track, swing trolleys, brackets and steering guides.

Sill: As frame profile.

Seal arrangement: Adjustable seal holder with chloroprene rubber seal.

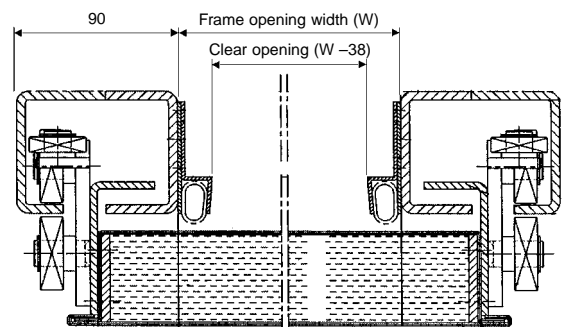
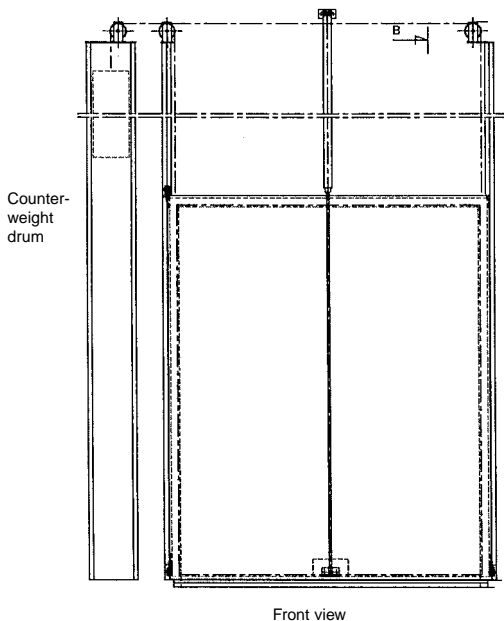
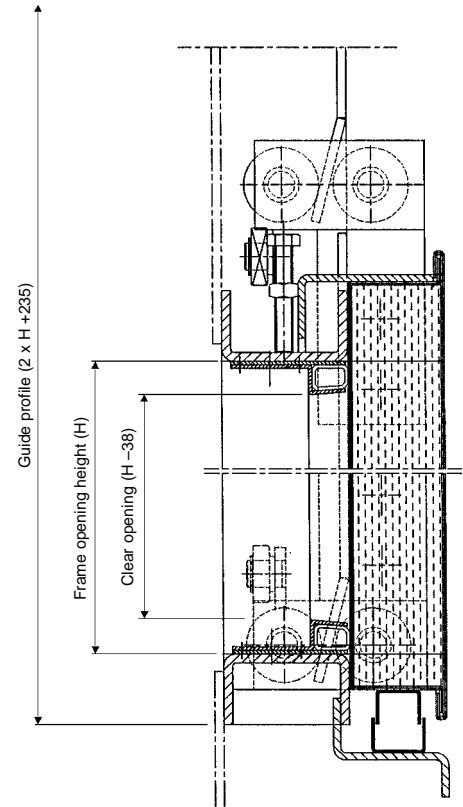
Finish: Door leaf galvanized and primed. Frame mild steel and primed.

Hardware: Locking arrangement. Emergency drop-stop device. Counterweight balance.

Max. size: 1400 x 2400, mm W x H.

Weight: Doorleaf and frame approx. 160 kg/m², excluding pneumatic or electric control system.

Operation: Pneumatic control system or electric control system.



SPECIAL FACTS

Optional features: Data sheet MOAS

Pneumatic operation: Data sheet MP1

Electric operation: Data sheet ME1

This door also available as standard fire door: Data sheet MAS7