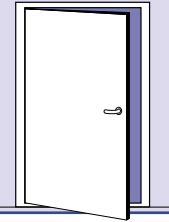


# HINGED SINGLE LIGHTWEIGHT FLUSH CABIN DOOR HI-KD-LWC

**B30 fire class**  
**Tested to IMO 754(18)**  
**FTP code part 3**

**EC Type-Examination Certified**  
**CE Marked**



## STANDARD SPECIFICATION

**Doorleaf:** 34 mm thick, lightweight board, insulation core with stiffeners, steel edge trim, preparation for modular lock, reinforced for overhead doorcloser on pull/hinged side.

**Frame:** 1,5 mm profiled galvanized steel frame with loose fixing profile to cap bulkhead panel 50 mm thick. Seal buffer in lock jamb.

**Sill:** Inverted u-profile in stainless steel.

**Finish:** Primed.

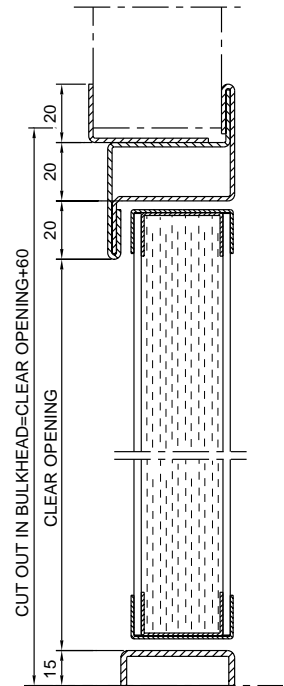
**Hardware:** 2 or 3 galvanized steel hinges, locks, lever handle and door closer.

**Max. size:** 950 x 2000 mm, W x H.

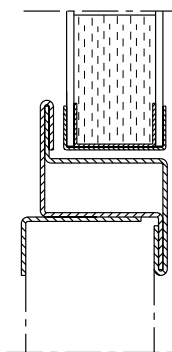
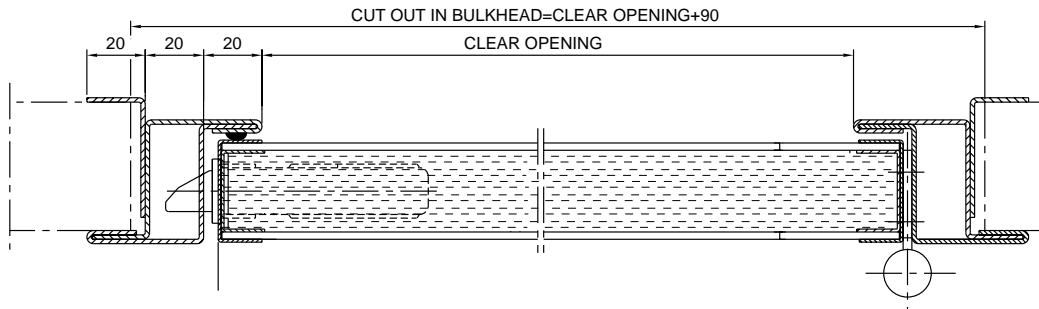
**Weight:** Depending on core and surface.

**Sound reduction:** Fitted with seal 31 dB Rw and sill alt. 1 or 4.

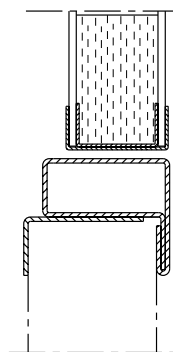
**Double leaf door:** Data sheet MBH2.



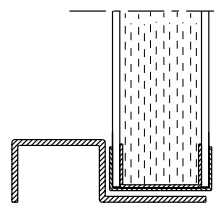
SILL ALT.3  
STANDARD VERSION



SILL ALT.1



SILL ALT.2



SILL ALT.4

## SPECIAL FACTS

**Optional features:** Data sheet MOBH