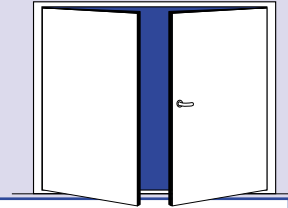


# HINGED DOUBLE LIGHTWEIGHT FLUSH DOOR HI-BDD-LWC

A60 fire class  
Tested to IMO 754(18)  
FTP code part 3

EC Type-Examination Certified  
CE Marked



## STANDARD SPECIFICATION

**Doorleaf:** 46 mm thick, lightweight board, insulation core with stiffeners, steel edge trim, preparation for modular latch and automatic flush bolts, reinforced for overhead door closer on pull side.

**Frame:** 3 mm Z-profile in galvanized steel, as standard welded to bulkhead.

**Sill:** Inverted u-profile in stainless steel.

**Hoseport hatch:** On request.

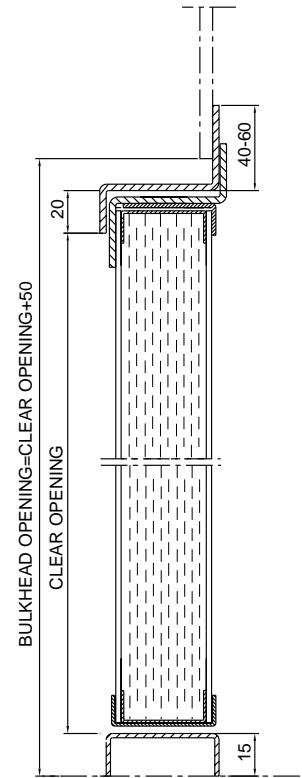
**Finish:** Primed.

**Hardware:** 2 or 3 adjustable galvanized steel hinges, latch, lever handle, door closer automatic flush bolts in nonactive door leaf and door selector/co-ordinator.

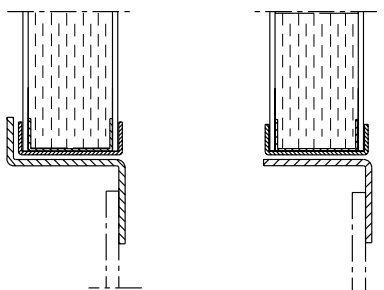
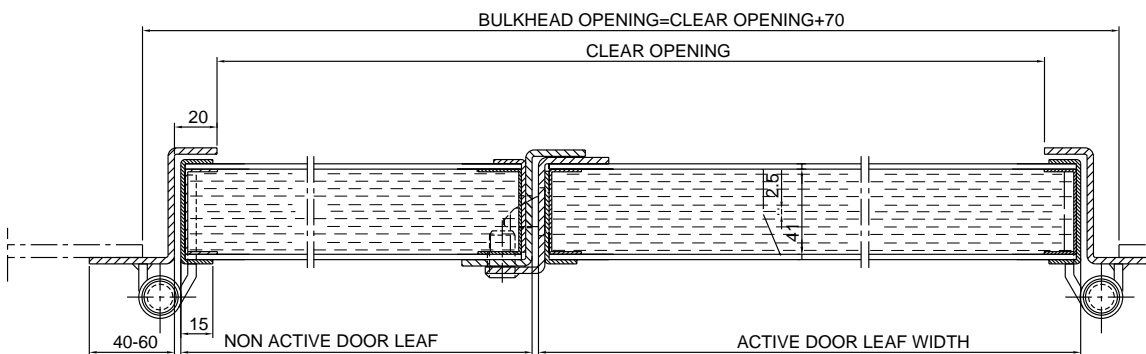
**Max. size:** 2366 x 2365 mm, W x H

**Weight:** Depending on core and surface.

**Single leaf door:** Data sheet MAH1.

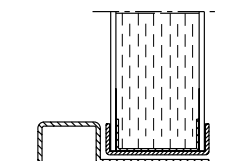


SILL ALT. 3  
STANDARD VERSION



SILL ALT. 1

SILL ALT. 2



SILL ALT. 4

### SPECIAL FACTS

Optional features: Data sheet MOAH