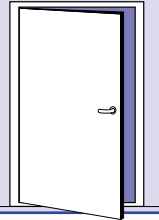


HINGED SINGLE LIGHTWEIGHT FLUSH DOOR HI-BD-LWC

A60 fire class
Tested to IMO 754(18)
FTP code part 3

EC Type-Examination Certified
CE Marked



STANDARD SPECIFICATION

Doorleaf: 46 mm thick, lightweight board, insulation core with stiffeners, steel edge trim, preparation for modular locks, reinforced for overhead doorcloser on pull side.

Frame: 3 mm Z-profile in galvanized steel, as standard welded to bulkhead.

Sill: Inverted u-profile in stainless steel.

Hoseport hatch: On request.

Finish: Primed.

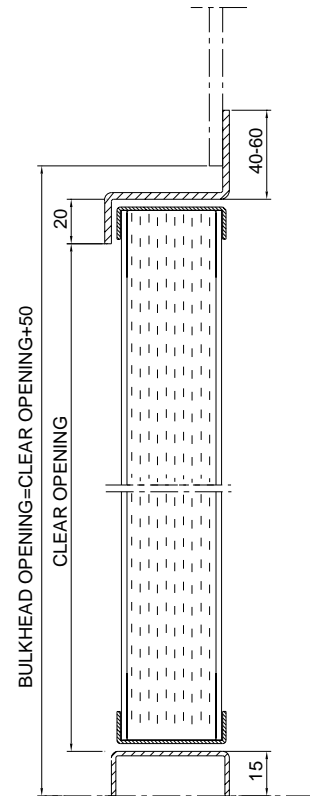
Hardware: 2 or 3 adjustable galvanized steel hinges, latch, lever handle and door closer.

Max. size: 1500 x 2255 mm, W x H

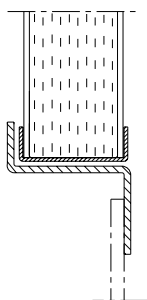
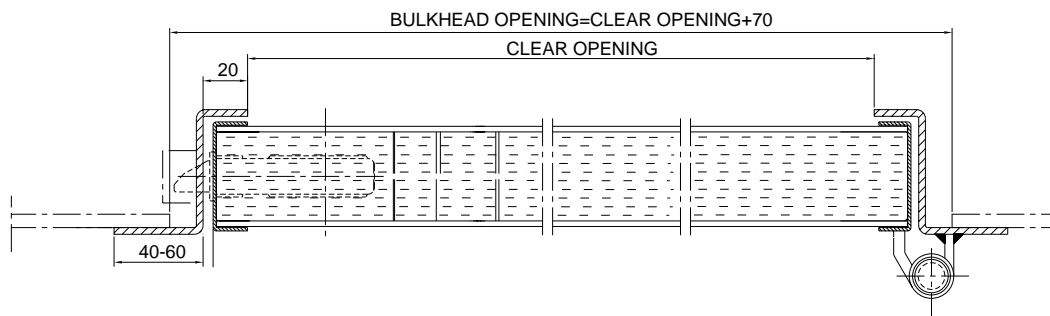
Weight: Depending on core and surface.

Sound reduction: When fitted with seals 31 dB Rw

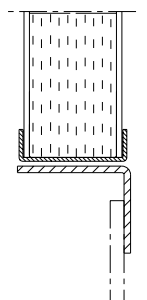
Double leaf door: Data sheet MAH2.



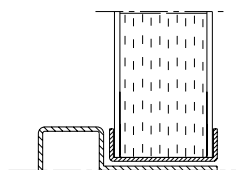
SILL ALT. 3
STANDARD VERSION



SILL ALT. 1



SILL ALT. 2



SILL ALT. 4

SPECIAL FACTS

Optional features: Data sheet MOAH