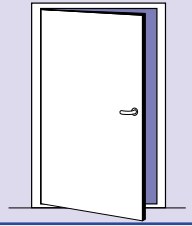


HINGED SINGLE REBATED DOOR HI-BD-F79-2

A60 fire class
Tested to IMO 754(18)
FTP code part 3

EC Type-Examination Certified
CE Marked



STANDARD SPECIFICATION:

Doorleaf: 43-54 mm thick, 1,0 - 1,5 mm galvanized steel skins, insulation core, preparation for modular locks, reinforced for overhead doorcloser on pull side.

Frame: 3 mm Z profile in galvanized steel, as standard welded to bulkhead.

Sill: Inverted U-profile as alt. 3 in stainless steel, 15 mm.

Hoseport hatch: On request.

Finish: Primed.

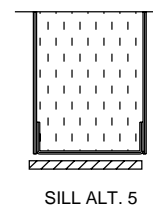
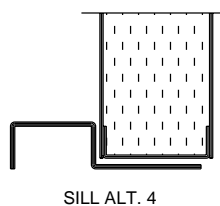
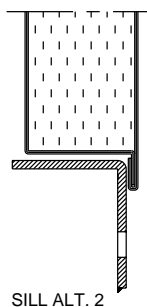
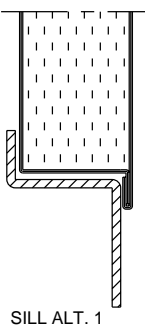
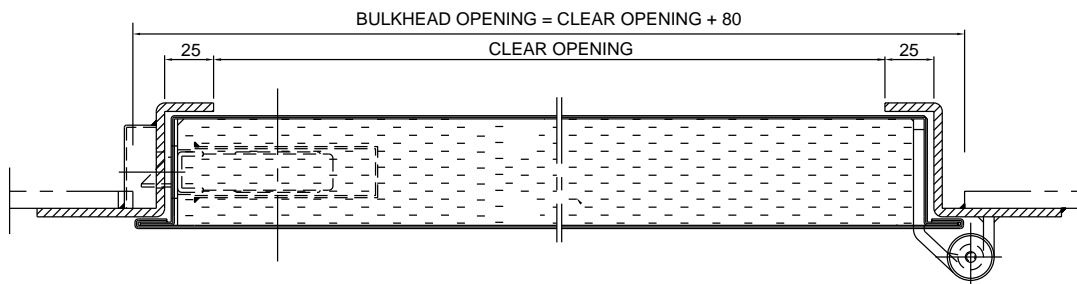
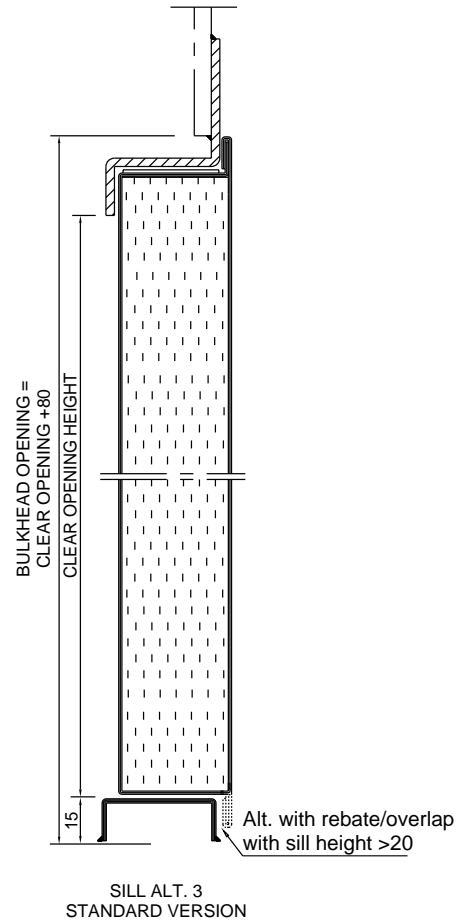
Hardware: 2 or 3 adjustable hinges, latch, lever handle and door closer.

Max. size: 1114 x 2064 mm, WxH

Weight: Doorleaf ≈ 35 kg/m²
Doorleaf and frame ≈ 45 kg/m²

Sound reduction: Standard version 38 dB Rw
Acoustic version 43 dB Rw

Double leaf door: Data sheet MAH5



SPECIAL FACTS
Optional features: Data sheet MOAH